

# Health and Wellbeing Board

28 June 2017

<b>Report title</b>	Joint Strategic Needs Assessment – Programme Update	
<b>Cabinet member with lead responsibility</b>	Councillor Paul Sweet Public Health and Wellbeing	
<b>Accountable director</b>	Linda Sanders	People
<b>Originating service</b>	Public Health	
<b>Accountable employee(s)</b>	Ros Jervis Tel Glenda Augustine	Director of Public Health 01902 558662 Consultant in Public Health - Evidence Glenda.augustine@wolverhampton.gov.uk
<b>Report to be/has been considered by</b>	Joint Strategic Needs Assessment Steering Group Public Health Senior Management Team People Leadership Team	09 May 2017 18 May 2017 12 June 2017

---

## Recommendation(s) for action or decision:

The Health and Wellbeing Board is recommended to note:

1. The completion of the Joint Strategic Needs Assessment (JSNA) Overview Report 2016-17.
2. The topics prioritised for the next year to be developed into topic-specific JSNAs.
3. Progress on developing an interactive interface for the JSNA products.

## **1.0 Purpose**

- 1.1 The purpose of this paper is to provide the Health and Wellbeing Board (HWBB) with an update on the completion of the Joint Strategic Needs Assessment (JSNA) Overview Report 2016-17. It will also outline the topics prioritised for topic-specific JSNAs within the next year and highlight the need to develop an interactive interface for the JSNA products.

## **2.0 Background**

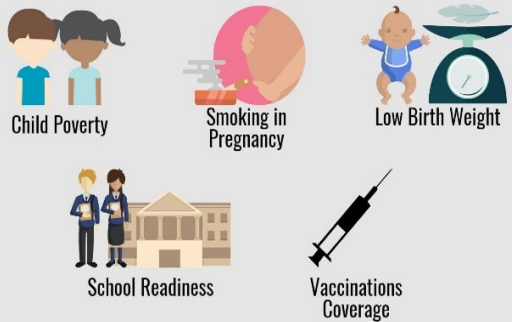
- 2.1 The JSNA is an integral part of improving population health and well-being and reducing local health inequalities. It aims to provide an assessment of the current and future health and social care needs of the local population. The identification of health and social care need will inform strategic planning alongside the commissioning of services across the whole system to address unmet need. The JSNA will also support the monitoring of trends and evaluation of performance data in relation to commissioned services.
- 2.2 In October 2015 the HWBB approved a large-scale review and redesign of the JSNA including an interactive interface for JSNA products. Updates on the progress of these products were provided throughout 2016 and this paper presents developments since November 2016.

## **3.0 JSNA Overview Report**

- 3.1 The JSNA overview report is now complete and includes a section on 'Wolverhampton City' and sections based on the life-course approach as listed below:
- How long do people live?
  - Causes of Early death
  - Start well
  - Develop Well
  - Live, work and stay well
  - Age Well
- 3.2 These sections include data on the current prevalence, trend analysis, national and regional comparisons including statistical neighbours. Information is also available on identified inequalities in terms of age, gender, ethnicity, deprivation, alongside variation between wards in Wolverhampton (where available). An explanation of the findings and the indicative commissioning needs, on the basis of the data available, are also presented.
- 3.3 A summary of key findings in each new section added since November 2016 to complete the overview report is presented below.

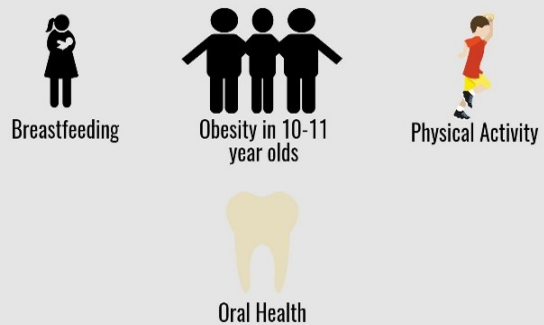
- Key findings for Start well section:

There have been Improvements in the following...



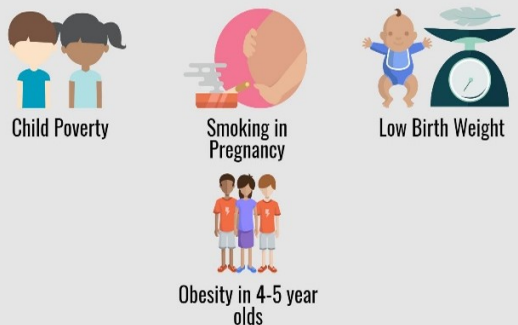
...however they still remain higher than the England average

In Children aged 0-5 years and pregnant women...



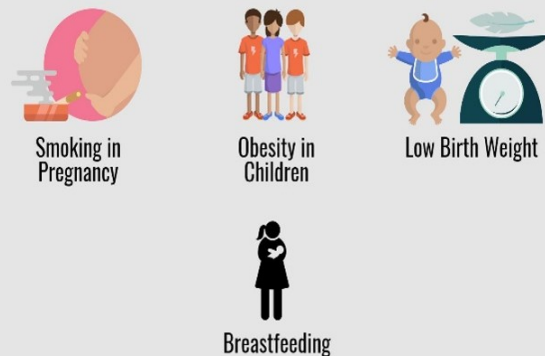
...have worsened and remained higher than the England average

In Children aged 0-5 years and pregnant women...

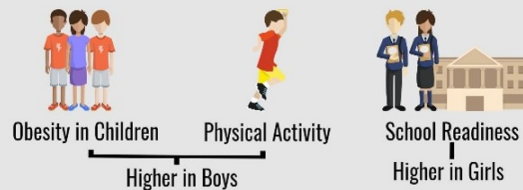


...are higher in more deprived areas of Wolverhampton

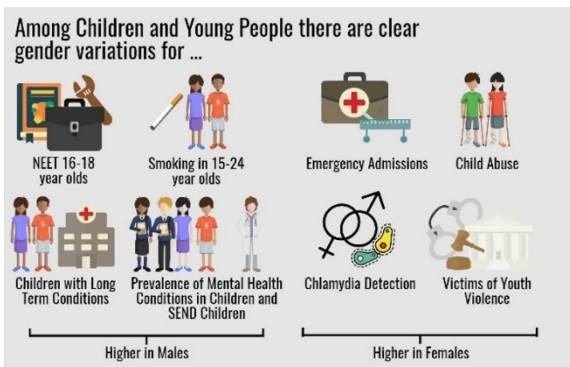
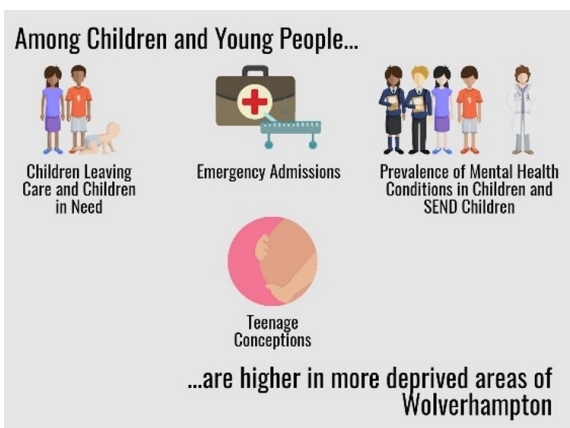
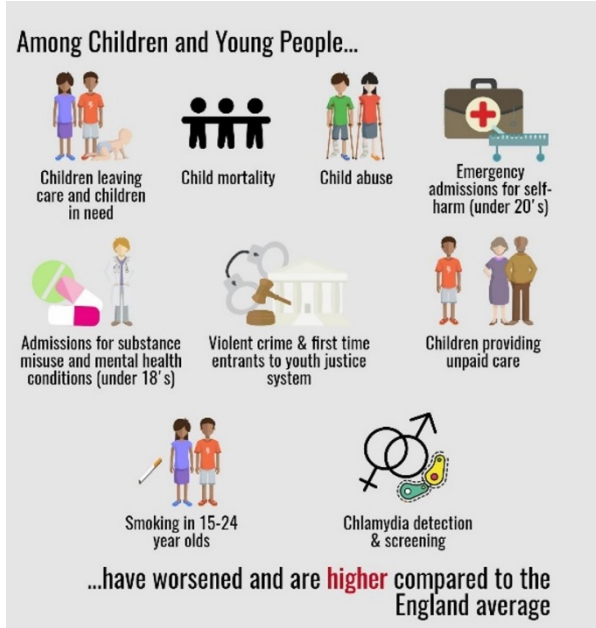
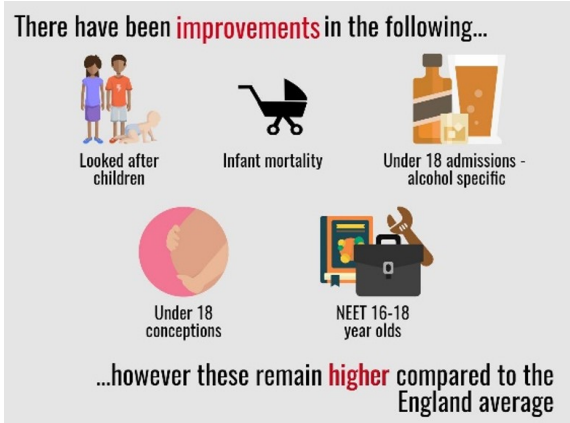
There are clear ethnic variations for...



There are clear gender variations for...

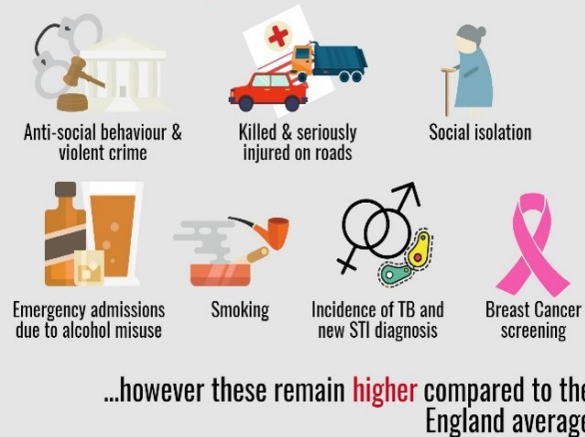


- Key findings for Develop well section

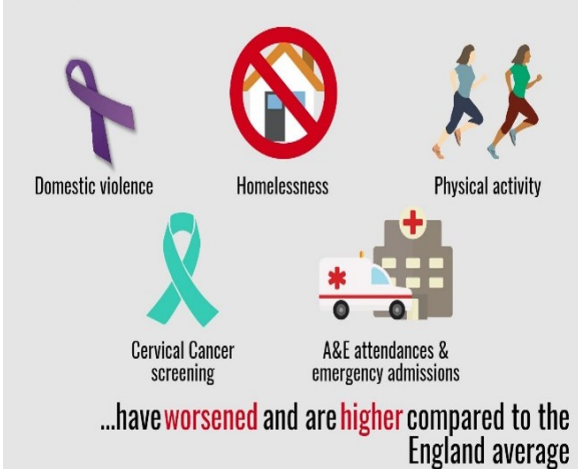


- Key findings for Live Work and Stay Well section

There have been **improvements** in the following...



Among adults of working age...



Among adults of working age...

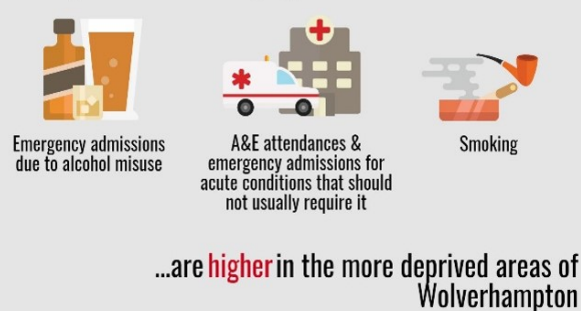


Among adults of working age...



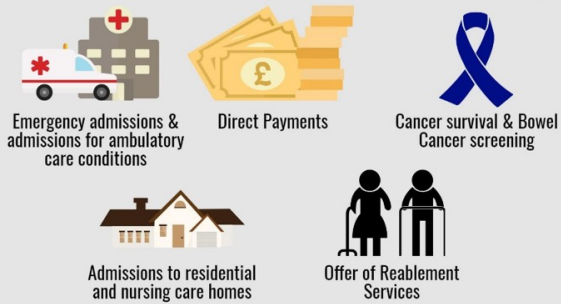
...there are clear ethnic variations across Wolverhampton

Among adults of working age...



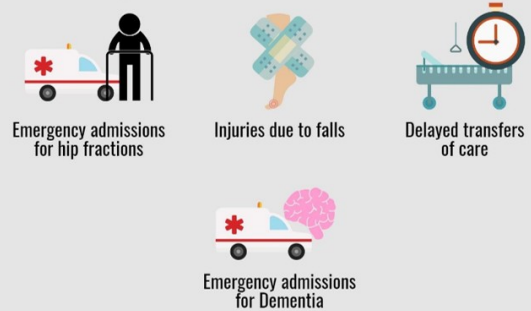
- Key findings for Age Well section

There have been slight **improvements** in the following...



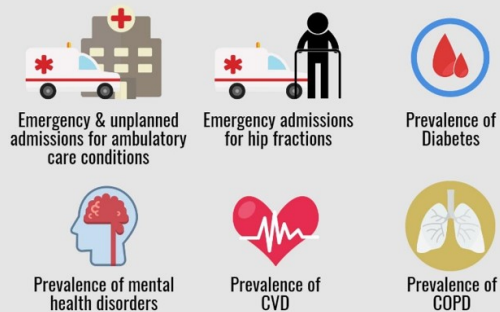
...however most of these remain **higher** compared to the England average

The following have **worsened**...



...however most of these remain **higher** compared to the England average

Among those aged over 65...



...are **higher** in more deprived areas of Wolverhampton

Among those aged over 65...



...there are clear ethnic variations



- Key findings for Wolverhampton City section

The population of Wolverhampton has **increased** by around...



**5,000**

between 2011 - 2015



The age distribution in Wolverhampton, differs to England...



More



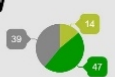
Fewer



Around **32%** of residents were very satisfied with their local neighbourhood, a further **51%** were fairly satisfied...



Around **14%** of residents were very satisfied with Wolverhampton, a further **47%** were fairly satisfied...



The economic rate between July 2015 - June 2016 was...



**73.0%**

Wolves

**78.1%**

England

The employment rate between July 2015 - June 2016 was...



**65.2%**

Wolves

**74.0%**

England

In 2015, Wolverhampton was ranked the most deprived local authority in England **17th**



The number of homeless applications and acceptances have decreased



40% of accepted applications are given full homelessness duty due to vulnerability



Wolverhampton suffers from poor air quality

**139** deaths are attributed to long term exposure to emissions, which accounts for

**5%**

of all mortality

- 3.4 Over the last year, various organisations including the Wolverhampton CCG, Royal Wolverhampton NHS Trust, Black Country Partnership Foundation Trust, University of Wolverhampton, Police and various departments within Wolverhampton Council such as public health, social care, education, housing, transport and business intelligence have been involved in providing data and developing the JSNA. We would like to continue with this participatory approach to the JSNA across the whole system of health and social care.

#### **4.0 Topics prioritised for topic-specific JSNAs**

- 4.1 A comprehensive topic prioritisation process was undertaken to identify the priorities to be developed into topic-specific JSNAs for the coming year. This process included completion of prioritisation templates that estimated population need based on a range of criteria such as severity, trend, benchmarking as well as influence of national/ local policy drivers. The templates were completed by Wolverhampton CCG, Social Care, Public Health and wider determinants such as Spatial Planning and NEET.
- 4.2 A topic prioritisation survey was undertaken with the public and members of staff of various organisations including City of Wolverhampton Council, Wolverhampton CCG, Royal Wolverhampton NHS Trust, Black Country Partnership Foundation NHS Trust, University of Wolverhampton and businesses within Wolverhampton. A total of 229 survey responses were received.
- 4.3 The results of the completed topic prioritisation templates and the topic prioritisation survey were considered by the JSNA Steering group on 9 May. The topics were categorised on the basis of the lead organisation/department for the topic previously agreed by the Steering Group – Public Health, CCG, Social Care and Wider Determinants.
- 4.4 Following discussion and a Steering Group voting exercise the following topic areas were prioritised for the development of topic specific JSNAs over the next year:
- Social Care – Currently being reviewed by social care
  - Public Health – ‘Violence (including children, domestic abuse, violent crimes)’ and ‘Falls’
  - Wolverhampton CCG – ‘Chronic Ambulatory care sensitive conditions’ and ‘Dementia’
  - Wider Determinants – ‘Employment and Health and Homeless People’ and ‘Rough Sleepers’

#### **5.0 Future development of the JSNA**



- 5.1 Currently, the JSNA products are available as a PowerPoint or Excel portable document format (PDF) which does not allow the user to search the various sections for specific information.
- 5.2 An interactive interface for the presentation of JSNA products was agreed by the HWBB in October 2015. As the JSNA is a partnership of health and social care agencies consideration needs to be given to how an interactive platform will be developed, funded and placed to ensure access to relevant, up to date information to inform health and social care commissioning.
- 5.3 In addition, we are planning to develop 'Live summary updates' which would include up-to-date data on key health and social care indicators which can support commissioning decisions.

## **6.0 Access to the JSNA**

All JSNA documents are now available on the Council website on the following link <http://www.wolverhampton.gov.uk/jsna>

## **7.0 Financial implications**

- 7.1 The interactive platform to be developed for the JSNA will cost approximately £10,000. The HWBB is to discuss and advise on how this is funded as the JSNA is a partnership of health and social care organisations.  
[GS/05062017/N]

## **8.0 Legal implications**

- 8.1 There are no anticipated legal implications to this report. RB/22052017/V

## **9.0 Equalities implications**

- 9.1 The process of analysing health and social care need may highlight inequalities in service access or provision which could adversely affect people differently or not meet the needs of certain groups. There will be specific recommendations made regarding commissioned services, where applicable, to address any inequalities identified

## **10.0 Environmental implications**

- 10.1 There are no environmental implications related to this report.

## **11.0 Human resources implications**

- 11.1 There are no anticipated human resource implications related to this report.

## **12.0 Corporate landlord implications**

12.1 This report does not have any implications for the Council's property portfolio.

**13.0 Schedule of background papers**

13.1 HWBB paper presented in November 2016, Wolverhampton Joint Strategic Needs Assessment: Policy and Process 2016 presented at JSNA Steering Group on 1 February 2016 and HWBB paper presented in October 2015